



# TURBOSOL<sup>®</sup>

PUMPING TECHNOLOGY FOR THE CONCRETE INDUSTRY

**TURBOSOL**  
over 60 years  
of experience  
and reliability

# TB 90C

## S-VALVE PUMP



TB 90C: cutting edge technology, new compact design for best performance in the toughest jobsites.

[www.turbosol.com](http://www.turbosol.com)

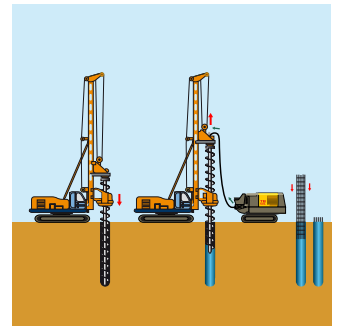
## TB 90C

## 90C

### TECHNICAL DATA

Liquid cooled diesel engine	Cummins - B4.5 turbo 4 cyl. - 129 kW - 173 HP (Stage V) @ 2200
Infinitely adjustable output (max)*	piston side 90 m <sup>3</sup> /h
Max. aggregate size	35 mm
Max. working pressure	piston side 80 bar
Pumping cylinders	Ø 200 mm stroke of 1600 mm
Max. strokes	30
Drive cylinder diameter	100/60 mm
Delivery manifold	Ø 150 mm
Hopper capacity	480 l
Water tank capacity	530 l
Diesel tank capacity	124 l
Filling height	145 cm
Max. speed`	2 km/h
Chassis	crawler with rubber pads
Size (L x W x H)	510X226X235 cm
Weight	7.130 kg

\* The data indicated are theoretical and depend on the quality and consistency of the materials to be used, wear and tear of the pump and the diameter of the hoses. The performance in distance and height cannot be reached simultaneously.



### Characteristics

TB 90C is the new crawler concrete pump with S-valve and variable output designed for filling bored piles. State of the art hydraulic system, solid structure, brand new components setup, reliable controls ensure high level performance with all sort of concrete and low operating costs.

### Applications

- Bored piles casting
- Pumping up to 35 mm of concrete
- Land reinforcement

### Technical comfort

- The practical doors on the canopy and the new construction concept make maintenance and control operations quick and easy.
- 4 lifting eyes.
- Discharge door hydraulically operated for fast cleaning operations.
- Components generously dimensioned.
- Fully hydraulic controls.
- New internal layout concept.
- Compact design.
- New hopper-valve-agitator design ideal even for harsh concrete.
- Remote control for pump and crawler.
- Optical and acoustic warning device.

### Scope of delivery

- 4-cylinder liquid cooled diesel engine
- Hopper assembly with S-valve and agitator
- Concrete grill with vibrator
- Automatic lubrication system
- Outlet collector Ø 150 mm with Victaulic couplings
- Hydraulic discharge door
- Safety horn
- Steel crawler chassis
- Hydraulic circuit with optimized exchange sequence
- Electromechanical control board
- Bosch Rexroth variable displacement pump
- Water pump 40 l/m<sup>3</sup> - 20 bar
- Water tank with 530 l capacity built-in
- Lifting eyes
- 4 working 15W led lights
- Delivery line laid laterally Ø 125
- Radio remote control for pump and crawler
- 2 washing sponges
- Manual grease pump
- Accessory box

### Optionals

- High pressure cleaner
- Various dimensions hoses Ø 125, Ø 100, Ø 75 and related accessories
- Hydraulically controlled air compressor, twin-cylinder, capacity 800 l/min and 50 l compressed air tank
- Rubber pads for crawler

# TURBOSOL

PUMPING TECHNOLOGY FOR THE CONCRETE INDUSTRY

TURBOSOL PRODUZIONE S.r.l.

Via Alessandro Volta, 1 - 31030 Pero di Breda di Piave (Treviso) - Italia

Tel. +39 0422 90251 - Fax +39 0422 904408 - E-mail: [info@turbosol.it](mailto:info@turbosol.it) - [www.turbosol.com](http://www.turbosol.com)

Standard equipment and optionals could vary due to specific market and legal requirements. The data in this brochure are purely indicative. Turbosol Produzione S.r.l. could make alterations to the models described in this brochure at any time for technical and commercial reasons.

