



# TURBOSOL®

PUMPING TECHNOLOGY FOR THE BUILDING INDUSTRY

**TURBOSOL**  
over 60 years  
of experience  
and reliability

# BETON MASTER

## S-VALVE PUMP



Beton Master: wear-resistant machine designed for heavy working conditions.

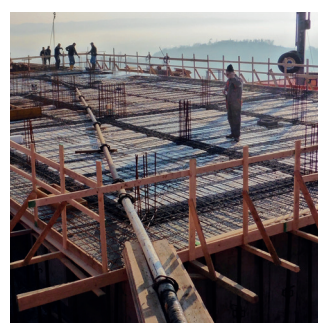
[www.turbosol.it](http://www.turbosol.it)

## BETON MASTER

### TECHNICAL DATA

Liquid cooled diesel engine	4-cylinder - Perkins - 404D22 - 36,3 kW - 50 HP (Stage III A)
Electric motor (upon request)	22 kW - 400 V 50 Hz
Infinitely adjustable output*	from 2 to 15 m <sup>3</sup> /h
Max. aggregate size	25 mm
Max. working pressure	80 bar
Pumping cylinders	Ø 120 mm stroke of 700 mm
Max. strokes	30
Drive cylinder diameter	80/50 mm
Delivery manifold	Ø 100 mm
Hopper capacity	250 l
Delivery distance*	200 m
Delivery height*	100 m
Filling height	135 cm
Chassis	Manual drawbar - fixed axle and pneumatic wheels
	On-road towing - with brakes and suspension approved for road use
Size (L x W x H)	336 (455 <sup>#1</sup> ) x 150 (142 <sup>#1</sup> ) x 160 cm
Weight (draw-bar)	1.550 kg - 1.600 kg <sup>#2</sup>
Weight (on road towing set up)	1.700 kg - 1.750 kg <sup>#2</sup>

\* The data indicated are theoretical and depend on the quality and consistency of the materials to be used, wear and tear of the pump and the diameter of the hoses. The performance in distance and height can not be reached simultaneously. #1 with on road towing (T) set up #2 with admixture dosing pump



SIZE (cm)

Manual draw bar



On-road towing



### Characteristics

Beton Master is a 2-cylinder hydraulic piston pump with S-valve and variable output for pumping concrete, micro-concrete, special concrete and for shotcrete. Beton Master is a reliable alternative to the common concrete mixers/pumps, especially in difficult working conditions.

### Applications

- Concrete, grouts, structural mortars, refractory mortars
- Self-levelling floor screeds
- Land reinforcement
- Micro-piles, pressurized injection of mortars and cementitious slurries
- Compaction grouting
- Shotcrete works

### Technical advantages

- Thanks to its unique mechanical engineering, to the dimensions of the pump-valve assembly and to the configuration of the hydraulic system, the machine can be used for transporting and casting concrete for spraying mortars and for shotcrete.
- With 80 bar of maximum pressure, the machine can pump between 2 and 15 cubic meters per hour of concrete to considerable heights and distances.
- It can be equipped with steel pipes or rubber hoses of different diameters depending on the amount and the particle size of aggregate to be pump.

### Scope of delivery

- 4-cylinder liquid cooled diesel engine
- Hopper assembly with S-valve and agitator
- Centralized lubrication system
- Delivery manifold Ø 100 mm Victaulic couplings
- Hydraulic circuit with optimized exchange sequence
- Electromechanical control board
- Bosch Rexroth variable displacement pump
- Lifting kit
- 30 m cable remote control
- Accessory box

### Pumping model

- concrete grill with electric vibrator
- 21 m steel pipe Ø 100, 3 m rubber hose Ø 100 and Victaulic coupling and gasket Ø 100, 4 steel bends Ø 100

### Shotcrete model

- Grill with 15 mm mesh with electric vibrator
- Reduction cone (Ø 100 - Ø 50), steel bend Ø 100 at 90°, 30 m rubber hose Ø 50 and related accessory kit Ø 50
- Shotcrete gun for hose Ø 50

### Optionals

- Electronic control board
- Anti-theft TATS (Turbosol Anti Theft System)
- Elastic axle for road towing with brakes and towlights (version /T)
- Admixture dosing pump
- High pressure cleaner
- 3-function radio remote control
- Various dimensions hoses Ø 100, Ø 75, Ø 65, Ø 50 and related accessories



PUMPING TECHNOLOGY FOR THE BUILDING INDUSTRY

Via Alessandro Volta, 1 - 31030 Pero di Breda di Piave (Trevise) - Italia  
Tel. +39 0422 90251 - Fax +39 0422 904408 - E-mail: info@turbosol.it - www.turbosol.it

Standard equipment and optionals could vary due to specific market and legal requirements. The data in this brochure are purely indicative. Turbosol Produzione S.p.A. could make alterations to the models described in this brochure at any time for technical and commercial reasons.

