

TURBOSOL-C LINE CONCRETE PUMPS

Foundation contractors and challenging terrain applications will take advantage from Turbosol-C line crawler concrete pumps.

4 models are currently available **TB 30C, TB 70C, TB 90C, TB 140C** can offer an output range from 30 to 140 m³/h and max pressure up to 80 bars.

Radio remote controls

Crawler systems and pump functions are combined into single highly efficient radio remote control.

Diesel engines

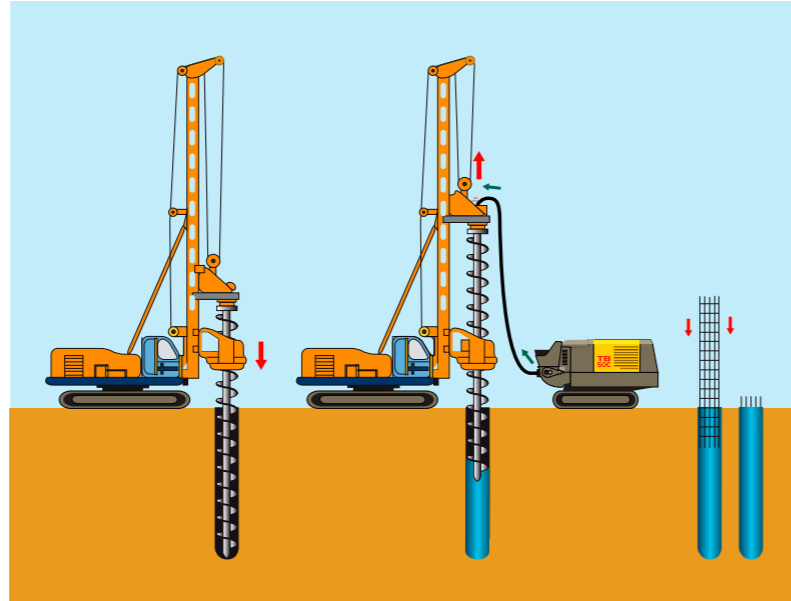
Available in Stage V or III A to comply with your local emission standard standards.

Self sufficient operations

Water tanks, water pumps and compressors are available to allow to work in difficult and remote areas.

Technical comfort

Discharge door hydraulically operated for fast cleaning operations, new internal setup concept for easy maintenance, components generously dimensioned for greater reliability.



TURBOSOL®

PUMPING TECHNOLOGY FOR PILING

TURBOSOL
over 60 years
of experience
and reliability

TB PILING RANGE



Vers. 1.0 - Settembre 2021

TURBOSOL

PUMPING TECHNOLOGY FOR THE PILING

TURBOSOL PRODUZIONE S.r.l.
Via Alessandro Volta, 1 - 31030 Pero di Breda di Piave (Treviso) - Italia
Tel. +39 0422 90251 - Fax +39 0422 904408 - E-mail: info@turbosol.it - www.turbosol.com

Standard equipment and optionals could vary due to specific market and legal requirements. The data in this brochure are purely indicative. Turbosol Produzione S.r.l. could make alterations to the models described in this brochure at any time for technical and commercial reasons.



www.turbosol.com

TECHNICAL DATA

TB 30C

Liquid cooled diesel engine	Yanmar - 4TNV88 - 4 cylinder - 36,4 kW - 49,5 HP (Stage III A) Yanmar - 4TNV88C-DYI2D - 4cylinder - 35.5kW - 48.3HP - (StageV)
Infinitely adjustable output*	piston side up to 30 m ³ /h
Max. aggregate size	35 mm
Max. working pressure	piston side 80 bar
Pumping cylinders	Ø 200 mm stroke of 570 mm
Max. strokes	28
Drive cylinder diameter	100/56 mm
Delivery manifold	Ø 150 mm
Hopper capacity	300 l
Water tank capacity	-
Diesel tank capacity	70 l
Hydraulic tank capacity	170 l
Compressor	800 l/min - optional
Air tank	-
Filling height	146 cm
Chassis	rubber track crawler
Max. speed	2 km/h
Size (L x W x H)	363x150x192 cm
Weight	2.650 kg

TB 70C

Liquid cooled diesel engine	Kubota - V3307 CRTEGB turbo 4 cyl. - 55 kW - 74 HP (Stage V - III A)
Infinitely adjustable output*	rod side up to 70 m ³ /h
Max. aggregate size	35 mm
Max. working pressure	rod side 55 bar
Pumping cylinders	Ø 200 mm stroke of 1000 mm
Max. strokes	37
Drive cylinder diameter	100/56 mm
Delivery manifold	Ø 150 mm
Hopper capacity	500 l
Water tank capacity	210 l
Diesel tank capacity	130 l
Hydraulic tank capacity	260 l
Compressor	800 l/min - optional
Air tank	-
Filling height	150 cm
Chassis	rubber track crawler
Max. speed	2 km/h
Size (L x W x H)	392x230x203 cm
Weight	4.250 kg

* The data indicated are theoretical and depend on the quality and consistency of the materials to be used, wear and tear of the pump and the diameter of the hoses.



TECHNICAL DATA

TB 90C

Liquid cooled diesel engine	Cummins - B4.5 turbo 4 cyl. - 129 kW - 173 HP (Stage V) @ 2200
Infinitely adjustable output*	piston side up to 90 m ³ /h
Max. aggregate size	35 mm
Max. working pressure	piston side 80 bar
Pumping cylinders	Ø 200 mm stroke of 1600 mm
Max. strokes	30
Drive cylinder diameter	100/60 mm
Delivery manifold	Ø 150 mm
Hopper capacity	480 l
Water tank capacity	530 l
Diesel tank capacity	124 l
Hydraulic tank capacity	345 l
Compressor	800 l/min
Air tank	50 l
Filling height	145 cm
Chassis	steel crawler with rubber pads
Max. speed	2 km/h
Size (L x W x H)	510X226X235 cm
Weight	7.130 kg

TB 140C

Liquid cooled diesel engine	Deutz - TCD 6.1 L6 - 180 kW - 241 HP (Stage V) @ 2300
Infinitely adjustable output*	piston side 140 m ³ /h
Max. aggregate size	40 mm
Max. working pressure	piston side 80 bar
Pumping cylinders	Ø 230 mm stroke of 2000 mm
Max. strokes	28
Drive cylinder diameter	140/90 mm
Delivery manifold	Ø 180 mm
Hopper capacity	550 l
Water tank capacity	700 l
Diesel tank capacity	200 l
Hydraulic tank capacity	450 l
Compressor	800 l/min
Air tank	50 l
Filling height	156 cm
Chassis	steel crawler with rubber pads
Max. speed	2 km/h
Size (L x W x H)	645X240X275 cm
Weight	10.500 kg

* The data indicated are theoretical and depend on the quality and consistency of the materials to be used, wear and tear of the pump and the diameter of the hoses.

